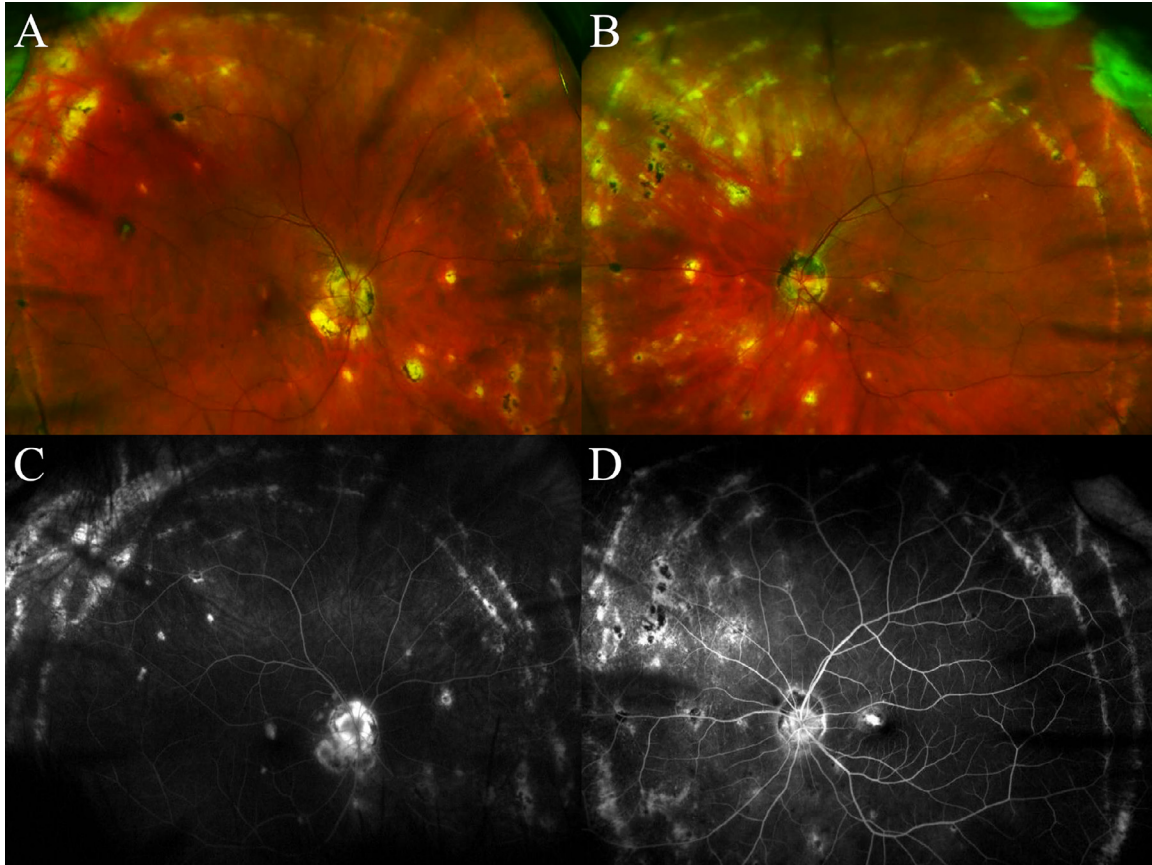


## Bilateral curvilinear chorioretinal streaks



**Fig. 1—A-B:** Ultra-widefield fundus photographs of both eyes demonstrating concentric chorioretinal streaks. **C-D:** Fluorescein angiography of both eyes further highlighting the Schlaegel lines.

A 46-year-old Caucasian woman presented with distorted vision in both eyes. Visual acuity was 20/25 OD and 20/50 OS. Fundus examination showed bilateral concentric chorioretinal streaks (Fig. A, B), which were hyperfluorescent on fluorescein angiography (Fig. C, D). The scars had formed in a curvilinear pattern called Schlaegel lines associated with multifocal choroiditis and panuveitis (MCP). She developed choroidal neovascularization (CNV) and was treated with photodynamic therapy. Her visual distortions resolved and vision improved to 20/20 OD and 20/25 OS.

MCP may result in significant vision loss from CNV. Prompt recognition of Schlaegel lines is important to prevent further complications.

### Supplementary Materials

Supplementary material associated with this article can be found in the online version at doi:[10.1016/j.jcjo.2020.05.007](https://doi.org/10.1016/j.jcjo.2020.05.007).

**Jong G. Park, Steven R. Sanislo, Quan Dong Nguyen**  
Stanford University, Palo Alto, CA

Originally received Mar. 18, 2020. Final revision Apr. 24, 2020.  
Accepted May. 12, 2020.

Correspondence to Quan Dong Nguyen, MD; [ndquan@stanford.edu](mailto:ndquan@stanford.edu).

### Footnotes and Disclosure

The authors have no proprietary or commercial interest in any materials discussed in this article.